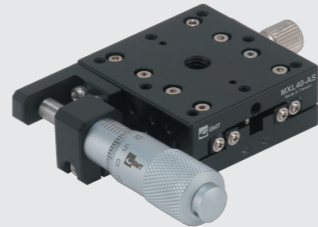


Product
Specification
**Positioning
Stages**

MXL40-AC



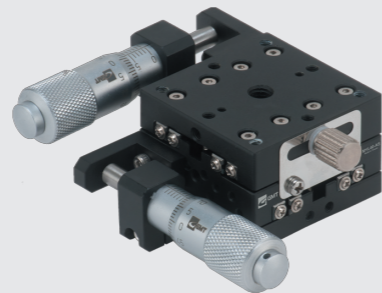
MXL40-AS



MYL40-AC



MYL40-AS

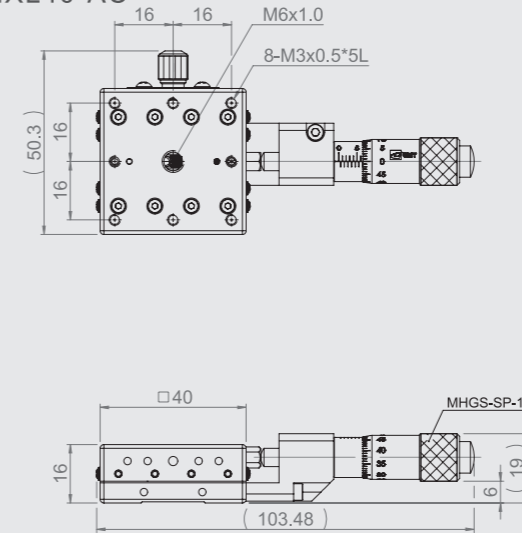


Specification

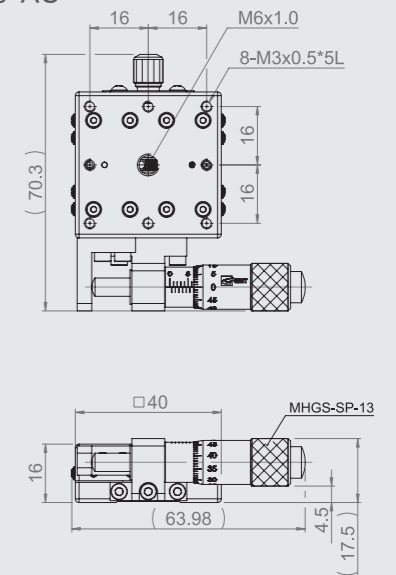
Unit : mm

Model No.	Table Size	Axis	Feed Position	Travel Stroke	Micrometer Minimum Reading (μm)	Straightness Accuracy (μm)	Allowable Loading (kgf)	Weight (kg)	Material	Surface Finish	
MXL40-AC	40*40	X-axis	Central	±6.5	10	3	3	0.13	Aluminum alloy	Black anodized	
MXL40-AS			Side								
MYL40-AC		XY-axis	Central								0.23
MYL40-AS			Side								

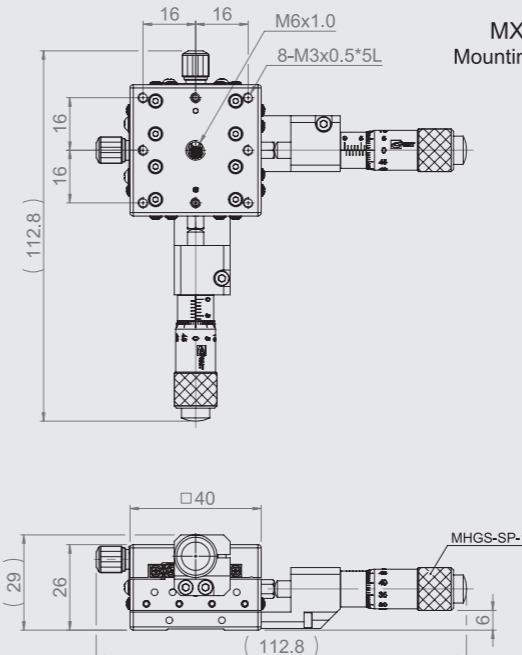
MXL40-AC



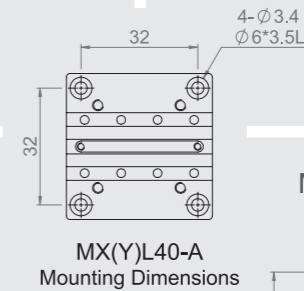
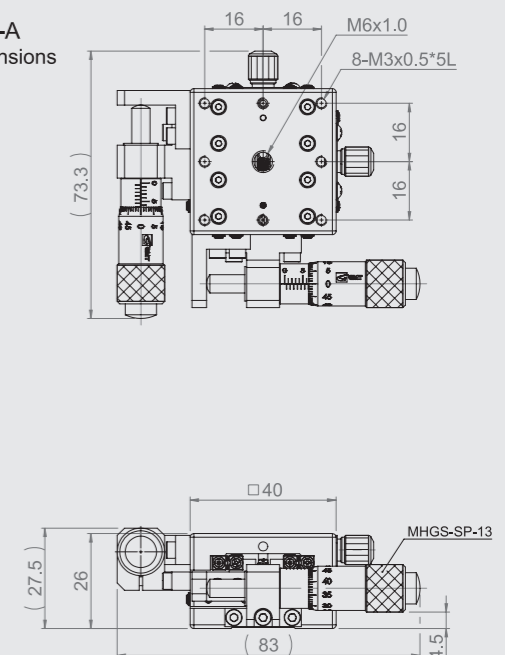
MXL40-AS



MYL40-AC



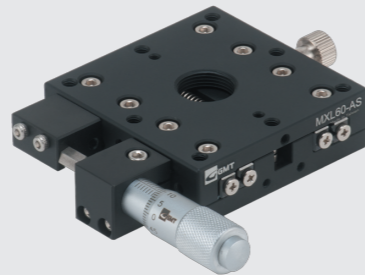
MYL40-AS



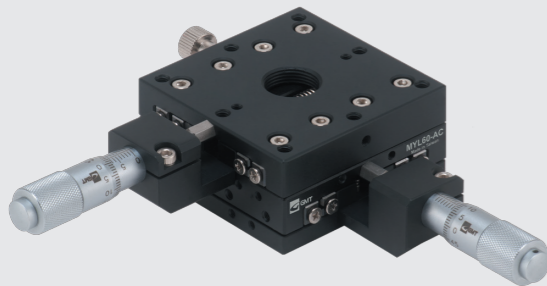
MXL60-AC



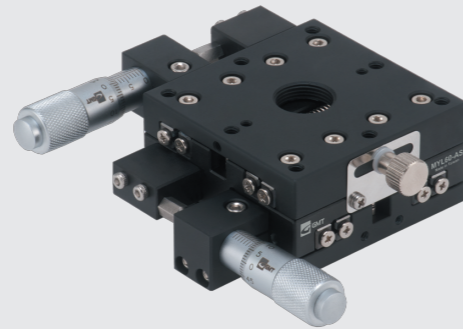
MXL60-AS



MYL60-AC



MYL60-AS

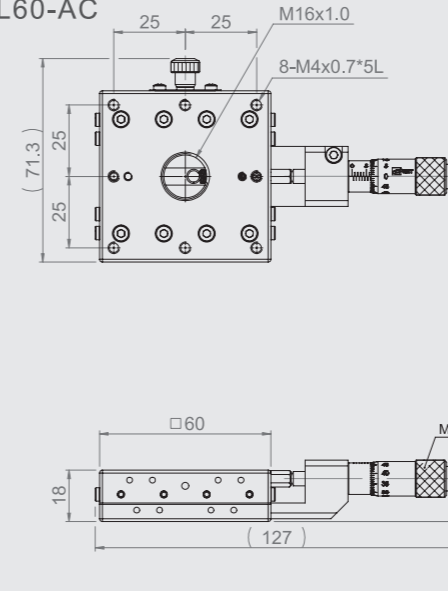


Specification

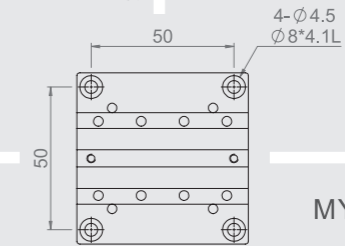
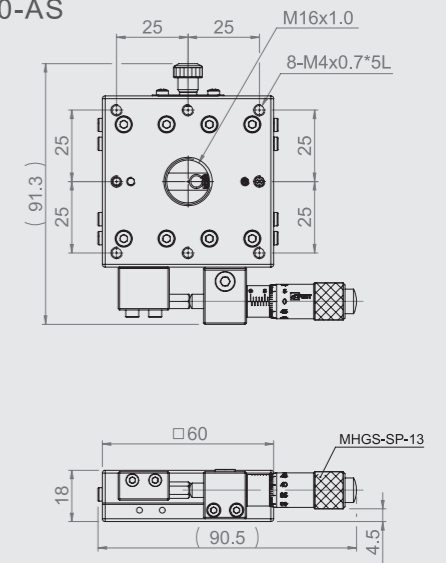
Unit : mm

Model No.	Table Size	Axis	Feed Position	Travel Stroke	Micrometer Minimum Reading (μm)	Straightness Accuracy (μm)	Allowable Loading (kgf)	Weight (kg)	Material	Surface Finish	
MXL60-AC	60*60	X-axis	Central	±6.5	10	3	5	0.3	Aluminum alloy	Black anodized	
MXL60-AS			Side								
MYL60-AC		XY-axis	Central								0.5
MYL60-AS			Side								

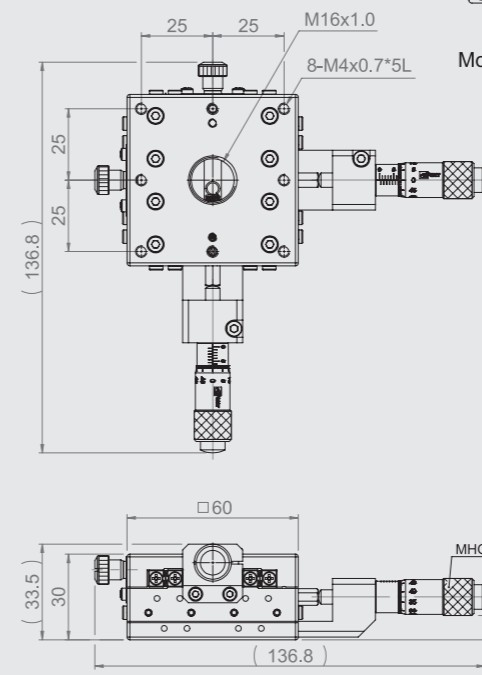
MXL60-AC



MXL60-AS



MYL60-AC



MYL60-AS

